



GMT MONTHLY MEMBERSHIP PROGRESS REPORT

Results as of: 6/30/2018

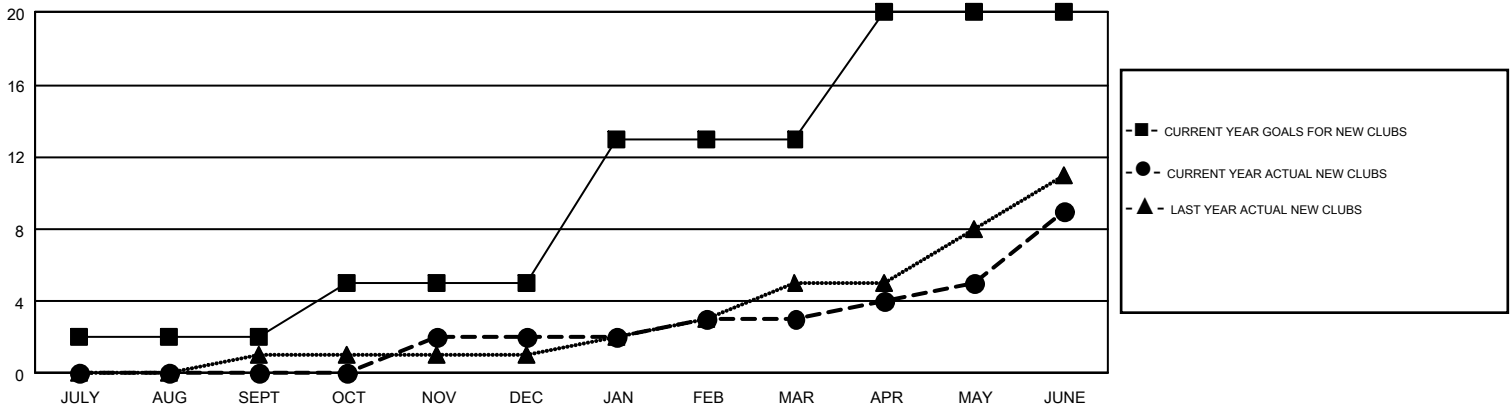
GMT Constitutional Area 2, Group B

GMT: CHRIS LEWIS

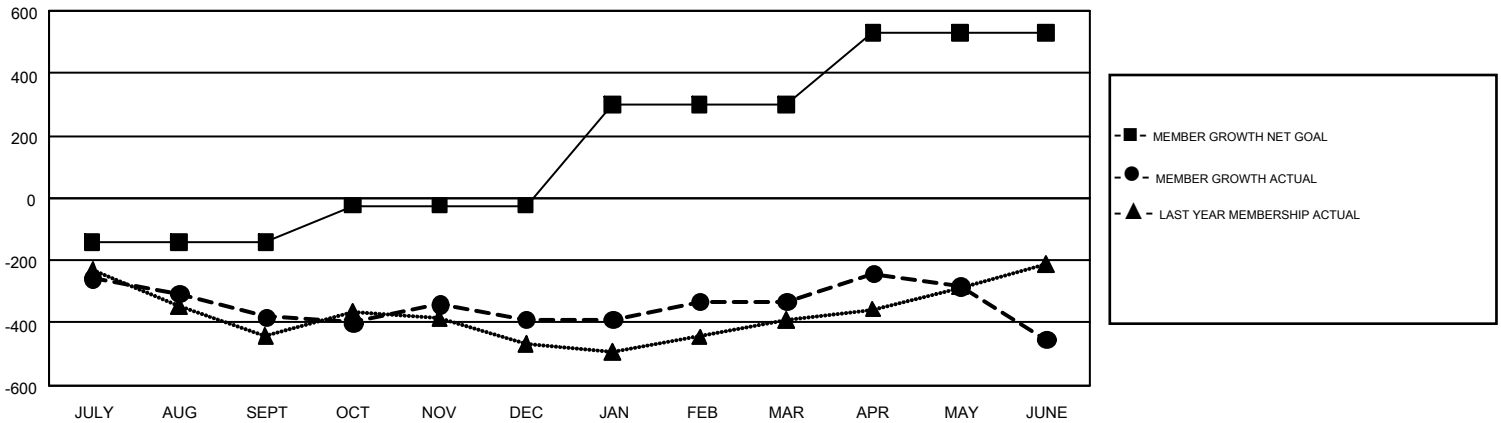
REPORT DOES NOT INCLUDE CLUBS IN UNDISTRICTED AREAS.

Clubs				Members			
RESULTS FOR 2017-2018				RESULTS FOR 2017-2018			
QUARTER	NEW CLUB GOAL	NEW CLUBS	DROPPED CLUBS	QUARTER	MEMBER GROWTH NET GOAL	MEMBER GROWTH ACTUAL	DROPPED MEMBERS ACTUAL (including transfers)
JULY/AUG/SEPT	2	0	1	JULY/AUG/SEPT	-140	275	586
OCT/NOV/DEC	3	2	5	OCT/NOV/DEC	116	644	596
JAN/FEB/MAR	8	1	1	JAN/FEB/MAR	323	551	433
APR/MAY/JUNE	7	6	1	APR/MAY/JUNE	231	988	1,040

GOALS AND ACTUAL NEW CLUBS CUMULATIVE



GOALS AND ACTUAL MEMBERS CUMULATIVE



DROPPED CLUBS: 8	560 CLUBS OF 777 ADDED 1 OR MORE NEW MEMBERS	GENDER DISTRIBUTION MALE 13,031 (69.85%) FEMALE 5,624 (30.15%)
DROPPED MEMBERS DECEASED 304 CLUB CANCELLED 81 OTHER 2,268 TOTAL 2,653	CLICK HERE FOR CUMULATIVE MEMBERSHIP DATA	TOTAL FAMILY UNIT MEMBERS 0 FAMILY MEMBERS PAYING HALF DUES 0